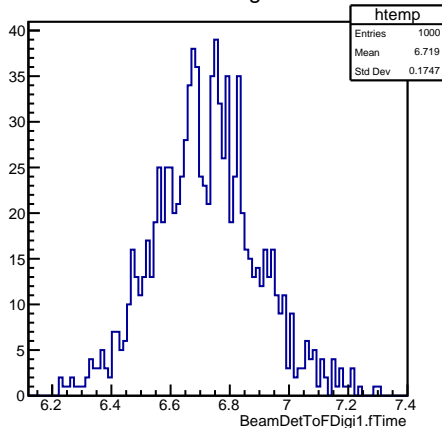
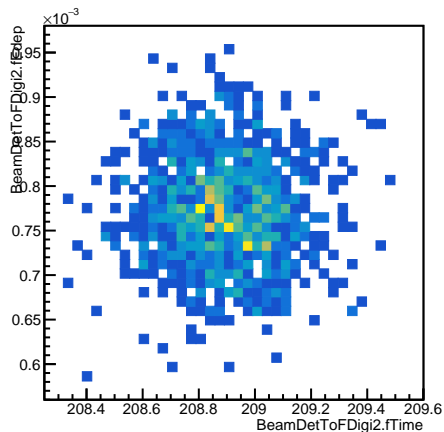


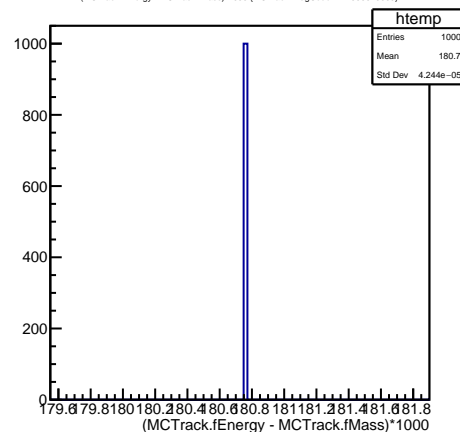
BeamDetToFDig1.fTime



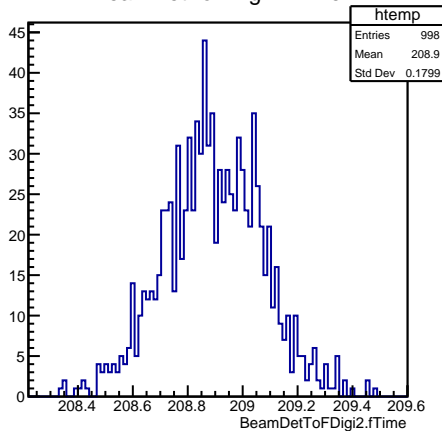
BeamDetToFDig2.fEdep:BeamDetToFDig2.fTime (BeamDetToFDig2.fEdep<0.02)



(MCTrack.fEnergy - MCTrack.fMass)*1000 (MCTrack.fPdgCode == 1000020060)



BeamDetToFDig2.fTime



((MCTrack.fMass+TMath.Sqrt(MCTrack.fMass^2 + BeamDetParticle.fP^2))*1000 (MCTrack.fPdgCode == 1000020060)

